

VALUE	CUM. VALUE	SUBGROUP
-----	-----	-----
287.6	#VALUE!	1
44.8	287.6	2
0.7	332.4	3
43.3	333.1	4
13.6	376.5	5
23.8	390.1	6
0.4	413.8	7
3.2	414.2	8
2.7	417.4	9
22.1	420.1	10
118.4	442.3	11
19.8	560.6	12
9.7	580.4	13
21.3	590.1	14
7.6	611.4	15
25.0	619.0	16
120.3	644.0	17
24.4	764.3	18
5.3	788.6	19
26.6	794.0	20

Directions:

-----

1. Select a choice from the above
2. Make the selection by moving "arrow" keys to your choice; then press the RETURN key.
3. Remember that Alt-M restores menus.

Written by Mark Horvatic  
Sept. 1983

3 menu.

; the  
hen

; the

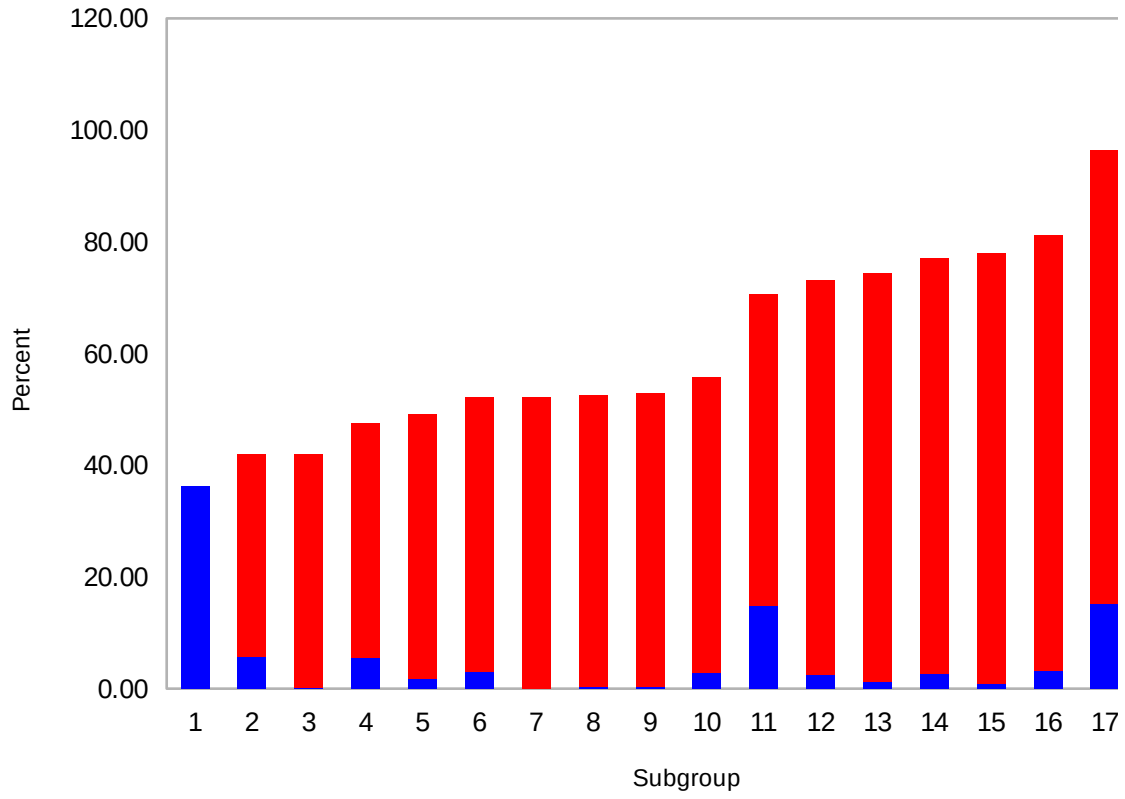
/xmi10~ /xmj10~

View	New data	Graph	Retrieve
View examples	Erase old data	Construct and	Retrieve a data
/dsg/gnurawnu/rea7..a26~/ria/dsg			/rea7..a26~/fcc
q/gnupercent~ /xgl8~		/xmk17~	/xgl8~
q/xgl8~			

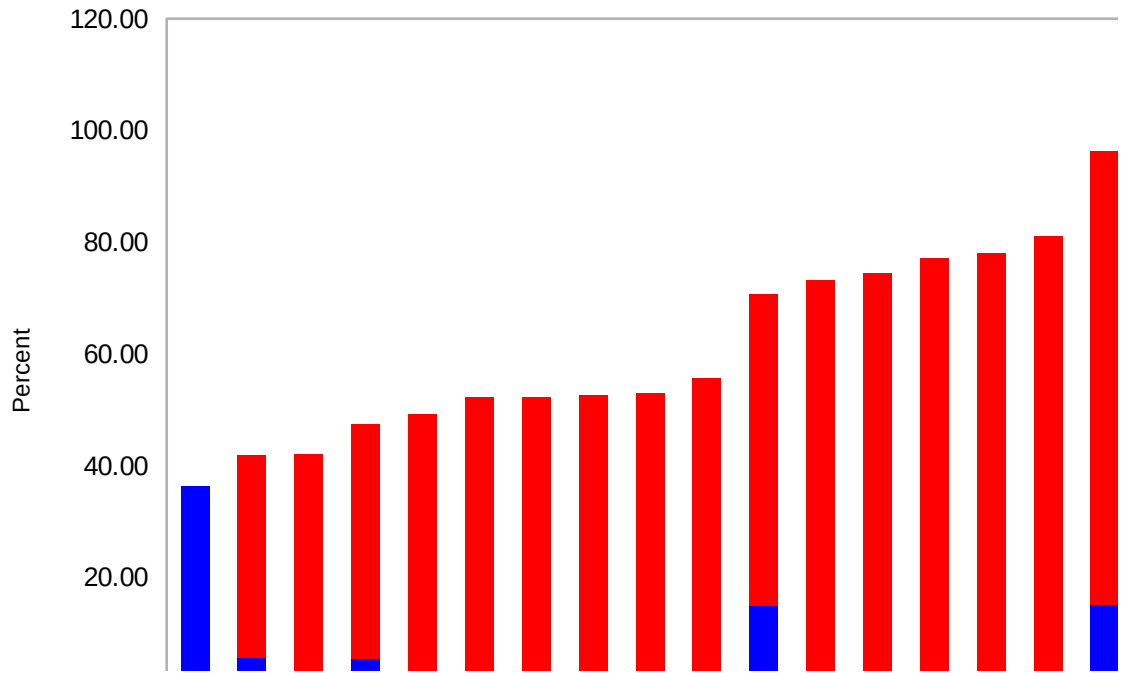
{goto}a1~{goto}a7~/xmj10~	Raw num	Percent
	Create a Pareto	Create a Pareto
	/gnurawnum~	/gnupercent~
	q/xgk13~	q/xgk13~

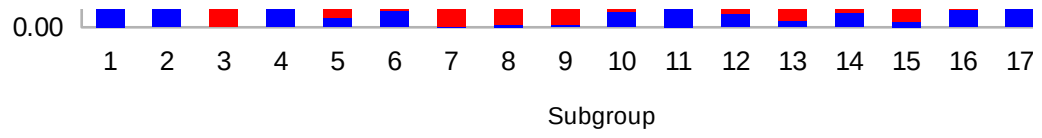
	36.22	#VALUE!
	5.65	36.22
	0.09	41.87
Save	5.46	41.96
Quit		
Save a data file	1.71	47.41
Exit PARETO program		
{goto}i15~/fxv/frdriver~	3.00	49.13
a7..a26~	0.05	52.12
r~{goto}a1~{goto}a7~/xgl8~	0.40	52.17
	0.34	52.57
	2.78	52.92
Quit	14.91	55.70
Return to main menu	2.49	70.61
/xgl8~	1.22	73.10
	2.68	74.32
	0.96	77.00
	3.15	77.96
	15.15	81.11
	3.07	96.26
	0.67	99.33
	3.35	100.00

Pareto Chart

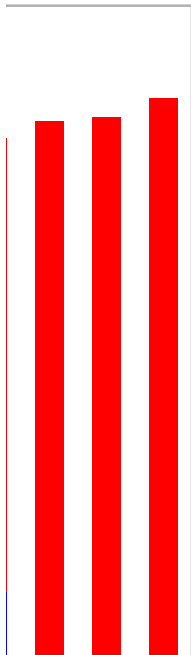
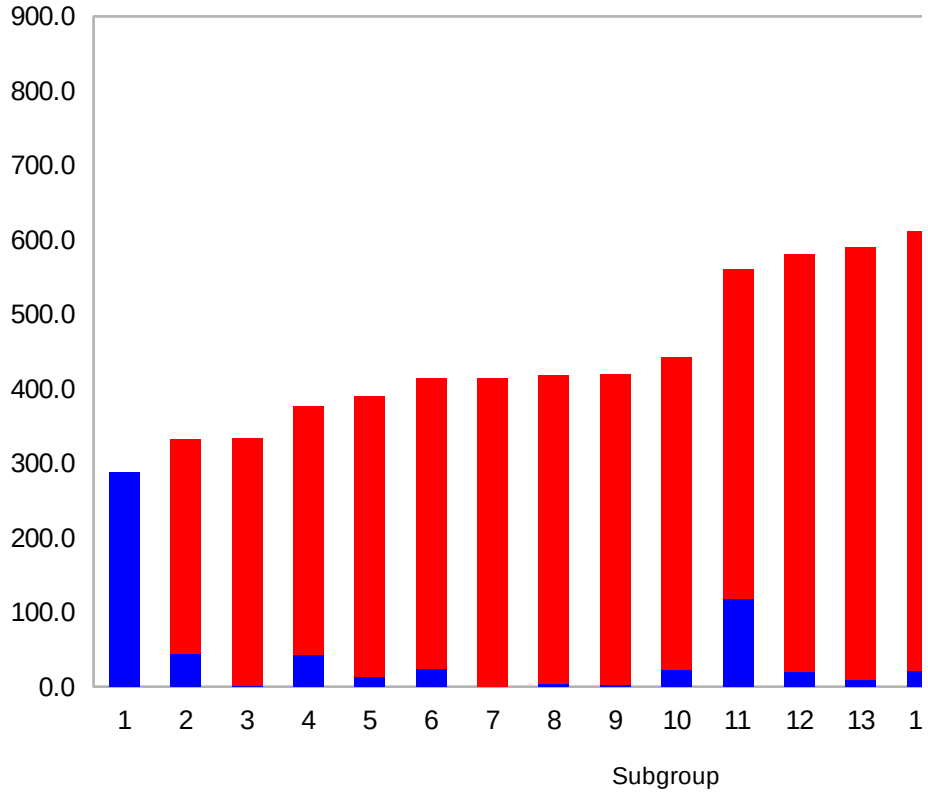
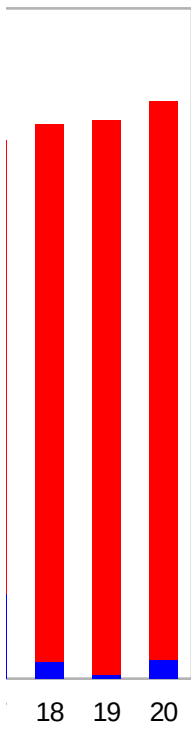


Pareto Chart





Pareto Chart





18 19 20

